

CT-SERIES Countertop Water Filter

INSTALLATION INSTRUCTION & OWNER'S MANUAL Ver 2.0



APEC WATER



www.FreeDrinkingWater.com

All Rights Reserved © APEC Water Systems

Please read and become familiar with the instructions before proceeding with the installation.

Before Installation:

Inspect the system:

Please take the system and all the components out of box. Inspect the system and all the connection fittings carefully, making sure nothing was damaged during shipping. If any part is cracked or broken, please do not proceed with the installation and contact APEC or your distributor for an exchange or diagnosis.

Operating Parameter

- Operating pressure: 20 psi minimum to 85 psi maximum
- Feed water temperature: 40-100 degree F (4-37 degree C)
- **Do not** connect or run **HOT** water through this system.

Basic Terms

GPD = Gallons Per Day (flow rate)

PSI = Pounds Per Square Inch (pressure)

General Installation/Operation/Maintenance Requirements

- Installation needs to comply with state and local laws and regulations.
- Do not use with water that is microbiologically unsafe or of unknown quality without adequate disinfection before or after system.

Copyright:

This manual is copyrighted by APEC Inc. Under the copyright laws, this manual may not be reproduced in any form, in whole or part, without the prior written consent of APEC Inc. Manual print ver. 2.0, 2020 Oct.

Note: This countertop water filter comes complete with the filter cartridge included inside, wrench, and two extra valve adaptors (13/16" and 12/16" I.D.) are provided to fit various faucet sizes.

COUNTERTOP FILTER HOOK UP:



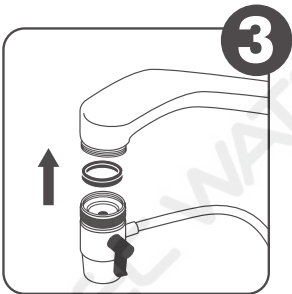
Step 1:

Make sure the water is turned off completely.



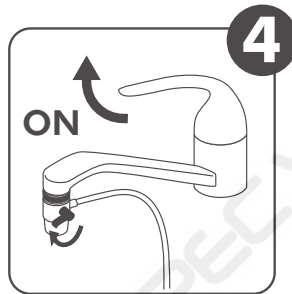
Step 2:

Remove your faucet's aerator (if there is one) by turning it **counter-clockwise**.



Step 3:

Screw the filter's diverter valve onto your faucet. Make sure the rubber washer is in place in the diverter valve. If the valve does not fit, try the other valve-adaptors provided.



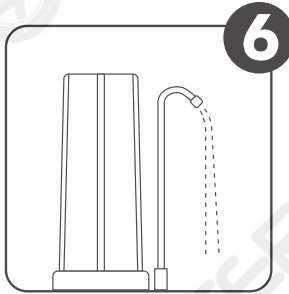
Step 4:

Turn the faucet on to FULL (cold water only) to supply maximum water pressure to the system. Tap water will flow out the bottom of the diverter head. Simply turn the black knob on the diverter head Clockwise to direct the water into the system.



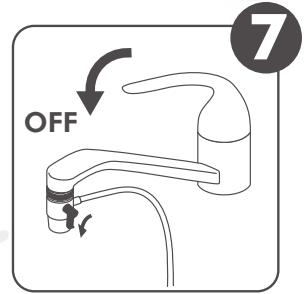
Step 5:

Check for leaks!



Step 6:

Let the water run through the filter for 5 minutes to rinse out the new cartridge.



Step 7:

Turn back knob **counter clockwise** to shut off water to the unit.



Please do not run hot water through the water filter; it is designed to process cold water only.

SYSTEM MAINTENANCE:

For CT-1000 Model: Use Cartridge #FI-PB1

The FI-PB1 cartridge should be changed every **2,500** gallons for filtering Lead, and **6,000** gallons for filtering Chlorine. If your usage is less than the above quantity in a year, the cartridge should still be replaced after **one year** to ensure cartridge effectiveness and sanitation.

For CT-2000 Model: Use Cartridge #FI-CERAMI

The FI-CERAMI cartridge should be changed every **1,000** gallons. If your usage is less than 1,000 gallons per year, the cartridge should still be replaced after **one year** to ensure cartridge effectiveness and sanitation.

Filter Housing O-rings:

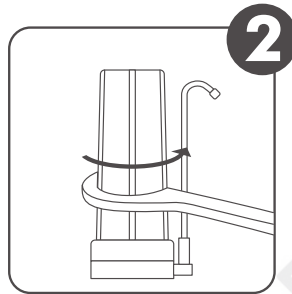
We recommend that the filter housing O-ring to be replaced **each year**.

FILTER CHANGE INSTRUCTIONS:



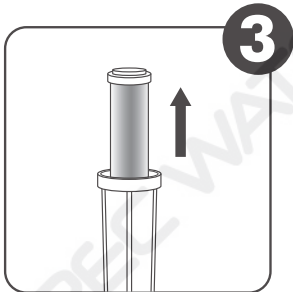
Step 1:

Make sure the water is turned off completely.



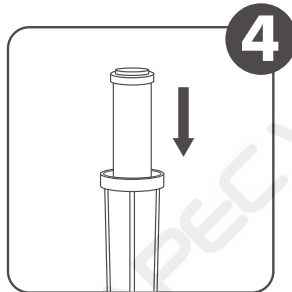
Step 2:

Open the filter housing: Slip the plastic wrench onto the housing and turn **count-**
er-clockwise. If necessary, lay the System down on the floor to get a better leverage. If the housing is too tight, use a hammer and tap lightly on the wrench handle to help turn the wrench.



Step 3:

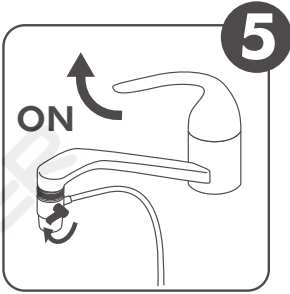
Discard the used cartridge, wash the inside of the housing with mild soap, and rinse off.



Step 4:

Put in new cartridge, and close up the housing by turning it **clockwise**. Make sure the housing has a black O-ring in the thread groves. Use wrench to tighten the housing.

FILTER CHANGE INSTRUCTIONS:



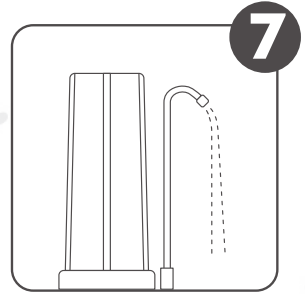
Step 5:

Turn on the cold water. Start the filter by turning the black knob on the diverter head Clockwise to direct water into the system.



Step 6:

Check for leaks!



Step 7:

Let water run through the filter for 5 minutes to rinse out the new cartridge.



Step 8:

Turn back knob **counter clockwise** to shut off water to the unit.

LIMITED PRODUCT WARRANTY

Scope

APEC takes pride in selling a superb line of products, including this Instant CT-Series Countertop Water Filter ("Product"). As such, APEC expressly warrants to the original purchaser that, for a period of one (1) year from the date of purchase, the Product will be reasonably free of defects in materials and workmanship. Within that one (1) year period from the original purchase, APEC will, at its option, repair or replace the Product without charge, or refund the cost of the Product, if the Product fails or does not perform as warranted solely due to a manufacturing defect within the warranty period, subject to the limitations and exclusions set forth in this Limited Product Warranty. This Limited Product Warranty only applies when the Product is used, stored, handled, fabricated and/or installed in the manner recommended by APEC in the Installation Instruction & Owner's Manual ("Manual").

Repair or Replacement

Repair or replacement during this one (1) year warranty shall include reasonable labor charges necessary to repair or replace the defective Product, but shall not include freight charges or any other local labor charges from third parties other than APEC, unless APEC expressly approves such charges in writing. During the entire one (1) year warranty, APEC's obligation to repair or replace shall further be limited to repair or replacement with the styles, models, products, colors, etc. of the Product that are available at the time of the repair or replacement, and shall be limited to the repair or replacement of only the specific Product that fails due to a manufacturing defect. Any repaired or replaced product shall also remain subject to the original one (1) year warranty from the date of the original purchase, and any repair or replacement shall not extend the original warranty period in any manner or start a new warranty period.

Conditions of Validity of this Limited Product Warranty

Even though the Product has extremely high endurance for operating conditions such as pH, temperature, and optimum water pressure, THIS LIMITED PRODUCT WARRANTY SHALL ONLY BE VALID IF:

1. The replaceable filter is changed and maintained on a regular basis as directed in the Manual. Moreover, depending on local water input water quality, regular maintenance may need to be increased.
2. The Product is operated within the confines of the following standard operating conditions:

	Water Pressure	pH Range	Water Temperature
Countertop System	20- 85 psi	2-11	40-100 F

Any information or suggestion by APEC with respect to the Product concerning applications, specifications or compliance with codes and standards is provided solely for your convenient reference and is made without any representation as to accuracy or suitability. You must verify and test the suitability of any information with respect to the Product for your specific application.

Non-Covered Defects

THIS LIMITED PRODUCT WARRANTY DOES NOT COVER DEFECTS CAUSED BY:

1. Improper storage, installation, maintenance, handling, use and/or alterations of the Product, including, but not limited to, non-compliance with the installation, maintenance and standard operation conditions stated in the Manual and this Limited Product Warranty.
2. Unreasonable use, unintended use, or misuse of the Product for something other than its intended purpose.
3. Use of replacement parts, filters or other accessories that are not sold or manufactured by APEC for use with this particular Product.
4. Damage not resulting from manufacturing defects that occur while the Product is in the original purchaser's possession.
5. Installation of the Product with known or visible manufacturing defects at the time of installation.
6. Damage caused by freezing, flood, fire or Act of God.

CONDITIONS THAT RENDER THIS LIMITED PRODUCT WARRANTY VOID

THIS LIMITED PRODUCT WARRANTY SHALL BE VOID IF:

1. The Product is not operated in compliance with normal municipal water conditions for which the particular model of this Product is intended.
2. The person seeking to invoke the warranty is not the original purchaser. That is, this Limited Product Warranty only extends to original purchasers.
3. The product is purchased used. That is, this Limited Product Warranty only covers new products.
4. The Product is purchased from someone other than APEC or one of APEC's authorized dealers. This is because, unless the Product was sold by APEC or one of its authorized dealers, APEC cannot verify or guarantee the integrity or authenticity of the Product.

General Conditions

The warranties set forth herein are the only warranties made by APEC in connection with the product. APEC cannot and does not make any implied or express warranties with respect to the product, and disclaims all other warranties, including, but not limited to, any warranty of merchantability or fitness for a particular purpose. Products sold by APEC are sold only to the specifications specifically set forth by APEC in writing. Other than the limited product warranty set forth herein, APEC makes no other warranties, express or implied. APEC's sole obligation under this warranty shall be repair or replacement of a non-conforming product or parts of the product, or at the option of APEC, return of the product and a refund of the purchase price. Buyer assumes all risk whatsoever as to the result of the use of the product purchased, whether used singularly or in combination with any other products or substances.

No claim by the buyer/owner of any kind, including claims for indemnification, shall be greater in amount than the purchase price of the products in respect to which damages are claimed. In no event shall APEC be liable to buyer/owner in tort, contract or otherwise, for any special, indirect, incidental, consequential, reliance, statutory, special, punitive or exemplary damages, including, but not limited to, lost profits, loss of use, loss of time, inconvenience, damage to good will or reputation, or loss of data, even if advised of the possibility of such damages or such damages could have been reasonably foreseen, in connection with, arising out of, or as a result of, the sale, delivery, servicing, use or loss of use of the products sold hereunder, or for any liability of buyer to any third party with respect thereto.

Obtaining Warranty Coverage or General Inquiries

If coverage is available, you may obtain coverage under this Limited Product Warranty by providing APEC with proof of original purchase, and that you are the original purchaser. For service under this Limited Product Warranty, you must notify APEC by phone at 1-800-880-4808, by email at techsupport@freedrinkingwater.com, or in writing at 301 Brea Canyon Road, City of Industry, CA 91789. In making the claim, please provide your name, address, phone number, a description of the product involved, and an explanation of the defect.

California Proposition 65 Warning

 **WARNING:** This product contains chemicals known to the State of California to cause cancer or birth defects or other reproductive harm. For more information go to www.P65Warnings.ca.gov.



Advanced Purification Engineering Corp.

301 Brea Canyon Road
City of Industry, CA 91789

For questions or comments please visit our website at:

FreeDrinkingWater.com

For technical support contact us at:

**Techsupport@freedrinkingwater.
com
1-800-880-4808**